



Cedarwood School

Prep Switchboard: 011 465 9830 / 011 467 4657
Emergency: 071 609 7253

College Switchboard: 011 467 4889
Emergency: 072 617 5291

113 Dunmaglass Road, Glenferness | www.cedarwoodschool.co.za



Considering AI as a form of learning support

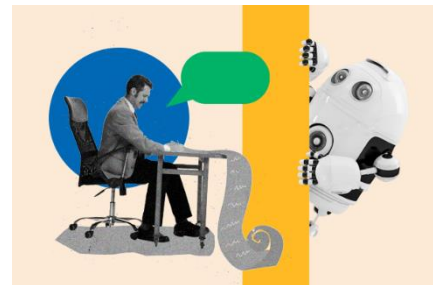


Chat GPT is becoming well-known as a supportive tool in learning and answering questions. It is a model pre-trained on a massive amount of text data from the internet, which allows the app to learn patterns, language structure, and context and provide feedback on any topic. This app allows any individual to input information that needs clarification, a simpler way of understanding or a question answered; essentially in a format that we have a 'chat' with a very knowledgeable source. It is widely enjoyed by users because of its ability to generate coherent and contextually relevant responses in a conversational manner, and it's free. However, it has also created concern amongst teachers and parents because pupils are using it to write essays or complete their work. How will we know how much support was provided or what pupils actually understand about what they are handing in?

Teachers and parents can be encouraged to consider understanding and using Artificial Intelligence (AI) to engage with pupils who have shown interest. Use it to improve engagement with the pupil and adapt and improve on learning experiences. As parents looking at the work expected of your child, is often feels that the work has changed so much, and it is hard to know how to help. ChatGPT could be used to feel more empowered and equipped to assist.

Some of the benefits of **using AI in conjunction with learning** include:

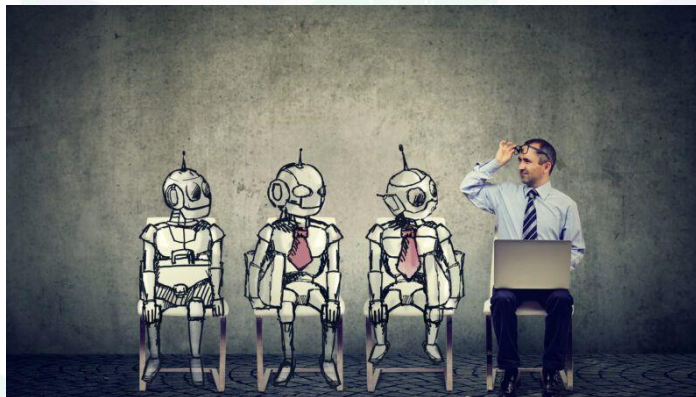
- ✓ The app can answer questions, explain concepts, and provide additional resources, catering to each pupils individual needs and providing **personalised assistance**.
- ✓ It is **available 24/7** which is helpful for pupils needing assistance outside of regular school hours or during the holidays.
- ✓ Providing **supplemental learning** material including explanations, examples and practice problems to reinforce classroom instruction and aid in better understanding.
- ✓ The **immediate feedback** provided enhances learning efficiency.



- ✓ Pupils can interact with the chatbot which allows for a more **interactive and engaging learning experience**.
- ✓ This app can be used to **improve language skills** such as writing essays or stories, and receive suggestions for improvement.
- ✓ ChatGPT can recommend **relevant educational resources** such as articles, video's, or websites to help pupils explore subjects in greater depth.
- ✓ ChatGPT can adapt its responses to suit **various learning styles** ensuring that pupils with diverse needs are catered to effectively.
- ✓ Additional support is available to **accommodate barriers to learning**, offering explanations in various formats (text/audio).
- ✓ The app can **facilitate peer tutoring** by guiding pupils through explanations or problem solving processes.



However, it's important to note that while ChatGPT has many potential benefits, it also has limitations. It might not always provide accurate information, and there could be instances where **human intervention or guidance is necessary** to ensure the quality of learning. Additionally, the use of technology in education should be carefully integrated into the curriculum to ensure it enhances the learning experience rather than replacing essential human interactions.

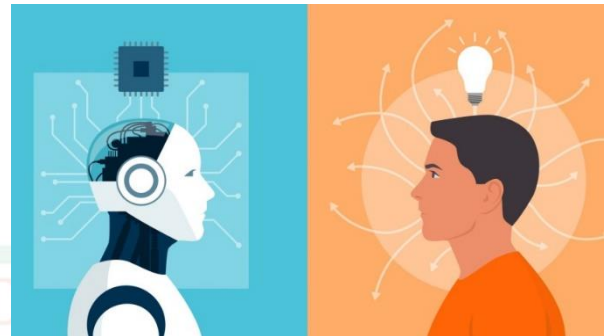


While using ChatGPT in a school setting offers several advantages, below are some challenges or limitations which are important to be cognizant of:

- ⊗ Pupils still need to be encouraged to use **critical thinking** to consider the provided responses and make them their own. Information provided by AI should be questioned and/or verified.
- ⊗ It **may provide incorrect or misleading information**, especially in subjects that require precise or up-to-date knowledge, because its responses are generated based on patterns in data.
- ⊗ **Meaningful human interactions** with teachers and peers, are still crucial for social and emotional development.
- ⊗ ChatGPT might **misinterpret the context** of a question or assignment, leading to irrelevant or nonsensical responses.
- ⊗ AI still needs to be acknowledged **by students to avoid plagiarism and maintain academic integrity**, encourage pupils to use ChatGPT as a reference.

- ⊗ **Data privacy awareness** is still essential, especially if sensitive pupil information is shared or stored by the tool.
- ⊗ **Overreliance** on ChatGPT might lead to pupils neglecting their own problem-solving skills, research abilities, and creativity.
- ⊗ ChatGPT may not be able to **adapt to individual learning styles** and needs as effectively as a human teacher can.
- ⊗ While ChatGPT can provide feedback, it might lack the nuance and **personalised guidance that a human teacher can offer.**

It would be considered beneficial if Chat CPT would be used as an initial source of a depth of knowledge; however pupils are still encouraged to engage in discussions about the content of what they have learnt with another person or adult in order to gain and maintain perspective.



Tips for Parents in supporting children in their use of AI:



- **Encourage collaborative opportunities** to explore the use of AI together so that children can feel guided, contained and empowered in the support available to them.
- **Model critical thinking** and teach your children to question what they see or read and check in with an adult.
- **Open discussions** with your children about what they are reading or seeing and, even when difficult, try to answer their questions at their level or ensure they feel safe bringing uncomfortable things to you.
- **Communicate** any concerns with the school team and share any positive experiences with the school so that we can work as a team in staying up-to-date with new opportunities using technology.

“

Artificial intelligence is not a substitute for human intelligence; it is a tool to amplify human creativity and ingenuity.

Fei-Fei Li
American computer scientist

