



Cedarwood School

Prep Switchboard: 011 465 9830 / 011 467 4657
Emergency: 071 609 7253

College Switchboard: 011 467 4889
Emergency: 072 617 5291

113 Dunmaglass Road, Glenferness | www.cedarwoodschool.co.za



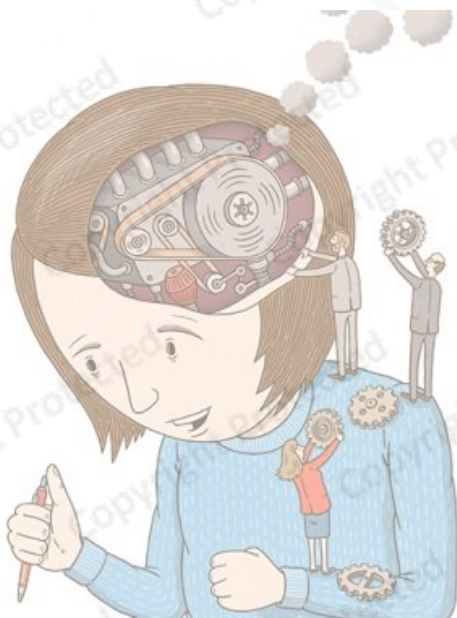
REMEDIAL EDUCATION AS A HUMAN RIGHT

The right to education

When we think of the right to an education, we often think of accessibility, physical infrastructure, finances, or historical discrimination. Barriers to learning can create unseen obstacles, parents and staff often wonder about which learning barriers have an impact on a child's access to education. Learning difficulties often go unnoticed and might need a specific approach to education with an aim for inclusion.

What is remedial education?

A remedial school provides an environment whereby pupils with special education needs can receive individualized support to build their skills and ultimately achieve their potential. Let's consider how a remedial school can improve your child's access to education, and how you can play a role in the work that they do.



Is a remedial school the best space for your child when they struggle with special education needs?

Remedial Education aims to provide an educational environment which best supports pupils with learning barriers. This environment begins with the school's ethos, and to see your child as an individual with unique needs and potential. In this way, the school is able to tailor a curriculum and classroom approach that best serves the needs of your child. This creates an environment of acceptance and inclusivity, and fosters a sense of belonging for all children,



regardless of their barriers. The smaller classrooms encourage learning that is more hands on, with a greater emphasis on face-to-face support.

How can children with special learning needs feel more supported?

While remedial schools play a significant role in preserving a right to education for pupils with learning barriers, we cannot forget that parents have a significant role to play as well. Your relationship with teachers has the potential to create a powerful net to support your children through their education. Below, we elaborate on these areas in which you can be empowered to take a more active role in your child's learning:



1) Open up a line of communication with teachers and support staff.

A parent's first step in supporting their children is knowing what they are doing in school. You are encouraged to communicate regularly with your child's teachers and keep up to date with their progress. Opening up a line of

communication with the school will create a collaborative relationship with staff who work your child in a classroom context.

2) Focus on your child's victories.

Children of all backgrounds can experience tremendous pressure to achieve, and to do so at a high level. For children struggling with learning difficulties, this pressure is increased substantially. Your children's hard earned victories throughout their school career, should be recognized and celebrated.



3) ***Open up a line of communication with your Child.***

Be sure to model a positive attitude by engaging openly and confidently with your children when discussing their education and its value. Empower and engage your children in decision making regarding their learning support needs.

Promoting active participation in your child is particularly important, as it not only supports the preservation of their rights, but also the reinforcement of their capabilities. Encouraging your child to participate actively in their learning develops responsibility for their education and promotes opportunities for lifelong learning.

